



# Matrix II Tunable White

## Cinematic Quad-Source LED Punch Light

The Matrix II Tunable White fixture draws 340W of power and produces an output greater than a 1K tungsten softlight. This output is generated by four Dense Matrix LED clusters that are set into a custom-designed reflecting chamber and enclosed by a layer of diffusion. With its four LED sources, the Matrix II Tunable White supports additional optics and accessories that can easily reshape the fixture's illumination. The fixture is compatible with light banks from Chimera as well as DoP Choice when using the speed ring accessory. It can also be used as a front-focused light with the optional quad-Fresnel, which increases beam intensity by 3x.

The Matrix also includes many of the features Fiilex is known for: tunable CCT and hue, robust construction, intuitive controls, etc. It is a flexible lighting tool for use both on location and in the studio.



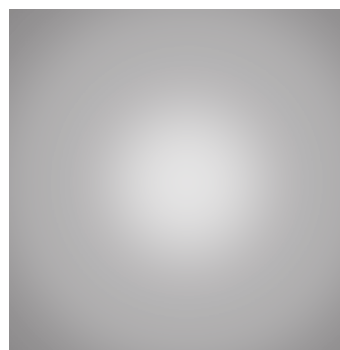
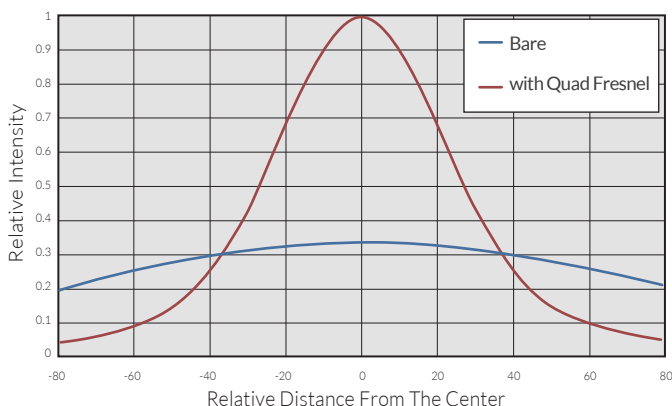
### FEATURES

- 340W power draw
- Quad 75W DiCon Dense Matrix LED
- 99° wide beam, 31° with optional Quad Fresnel
- Smooth dimming down to 0%
- Flicker free at any frame rate
- Tunable CCT (2800-6500K)
- Hue control ( $\pm 0.25$  green/magenta)
- High CRI at any color temperature
- Broadband full-spectrum LED source
- Designed in USA. Assembled in USA/Taiwan

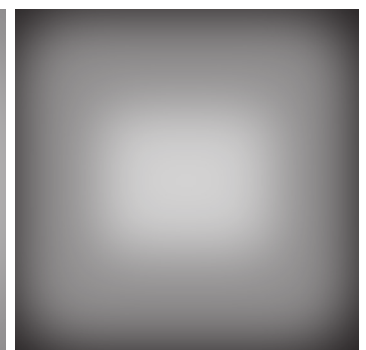
### EXCELLENT COLOR RENDERING

CCT	R1	R2	R3	R4	R5	R6	R7	R8	R9	R10	R11	R12	R13	R14	R15	CRI <sub>Ra</sub> *	CRI <sub>Ext</sub> *	TLCI
3200K	99	99	93	98	98	97	98	98	94	91	97	83	99	95	98	97	95	97
5600K	97	99	98	92	95	96	95	94	86	94	93	81	98	99	96	96	94	94

### BEAM PROFILE



Matrix II



Matrix II with Quad Fresnel

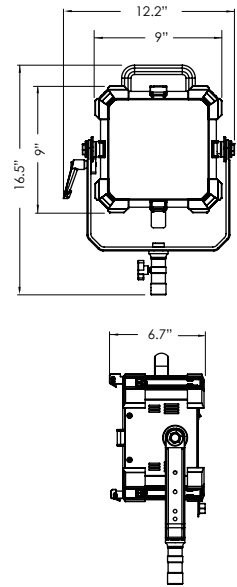
190925A

# Matrix II Tunable White

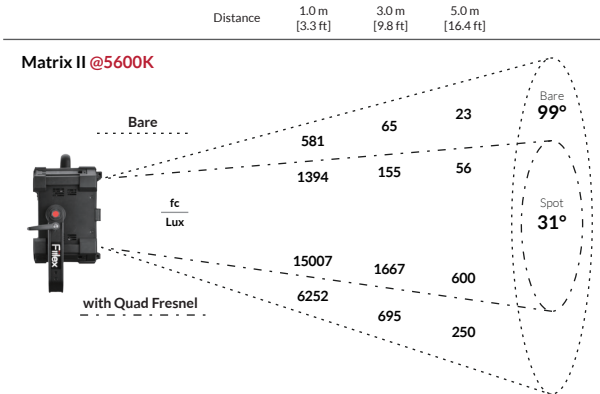
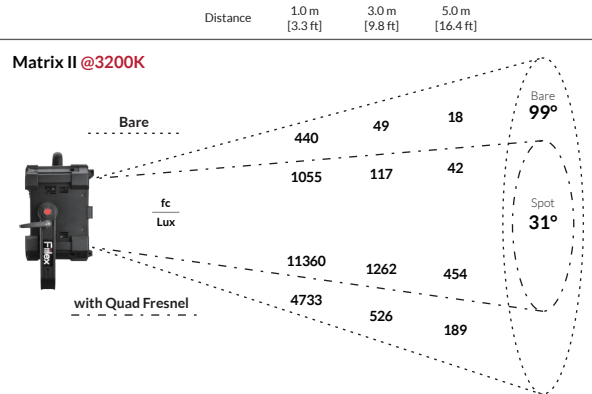
Cinematic Quad-Source LED Punch Light

## SPECIFICATIONS

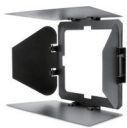
Fresnel Size	Optional Quad Fresnel Leans (Removable)
Beam Angle	99° (31° w/ Optional Quad Fresnel Lens)
CCT Range	2800-6500K Continuous Tuning
Hue Control	± 0.25 Green/Magenta
CRI	96 Typical
Dimming	100% - 0%
LED	(Four) 75W DiCon Dense Matrix LED
Input Power	120V-240VAC
Power Consumption	340W Max AC   300W Max DC
Power Adapter	AC Input: 100-240V AC, 50~60Hz   DC Output: 48V
Power Port	XLR-3P
DMX Port	Two XLR Ports-5P (512 Addresses)
USB 5V	Yes
Weight	Fixture: 9.7 lbs / 4.4kg (Includes Yoke)   Power Adapter: 5.7 lbs/2.6kg
Size	L 6.7" x W 12.2" x H 16.5" / L 171mm x W 311mm x H 418mm
Mount Style	Baby Stud 5/8" Female (16mm) and Junior Stud 1-1/8" Male (28mm)
Thermal Design	Advanced Vapor Cooling System (Fan Cooled)
Operating Temperature	32 - 104°F / 0 - 40°C



## PHOTOMETRIC DATA



## OPTIONAL ACCESSORIES & KITS



Matrix Barndoor



Quad Fresnel



Matrix Speed Ring



Softbox



H141 Kit  
1x Matrix II Tunable White