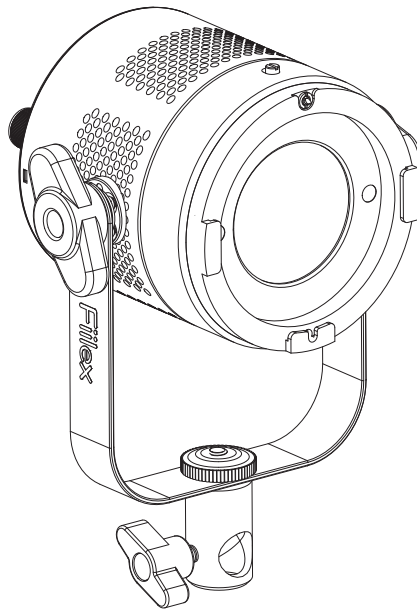


# Fiilex



## **P360 Gen II Series**

FLXP360C | FLXP360P | FLXP360PP

User Manual

## General Notes:

- Please read the following operating instructions very carefully before using this fixture for the first time. They contain important information on the operation of Fiilex lighting equipment.
- For your own safety, please follow all safety instructions and warnings.
- Please also follow the operating instructions of the light and power adapter manufacturers.
- Keep these operating instructions for you and subsequent users for reference in the future.
- For further information, please ask your retailer or enquire at your local authorities. Only use Fiilex spare parts and accessories ([www.fillex.com](http://www.fillex.com)).

## Basic Operation (refer to Parts Diagram on following page)

### • Mounting the P360 Gen II Series

The Light Stand Adapter (14) on the P360 Gen II Series can be mounted to a baby / junior stand with combo pin. Secure the fixture to the stand by turning the tightening knob.

### • Powering on the P360 Gen II Series

The P360 Gen II Series comes with a power adapter. To supply a P360 Gen II Series with power, insert the connector into the DC Power Input Jack (9), then connect the DC plug into an active wall socket. The fixture's OLED Display (15) will turn on once it is receiving power. The On/Off Button (10) can toggle the fixture's output on and off. Settings can still be adjusted while the switch is set to off.

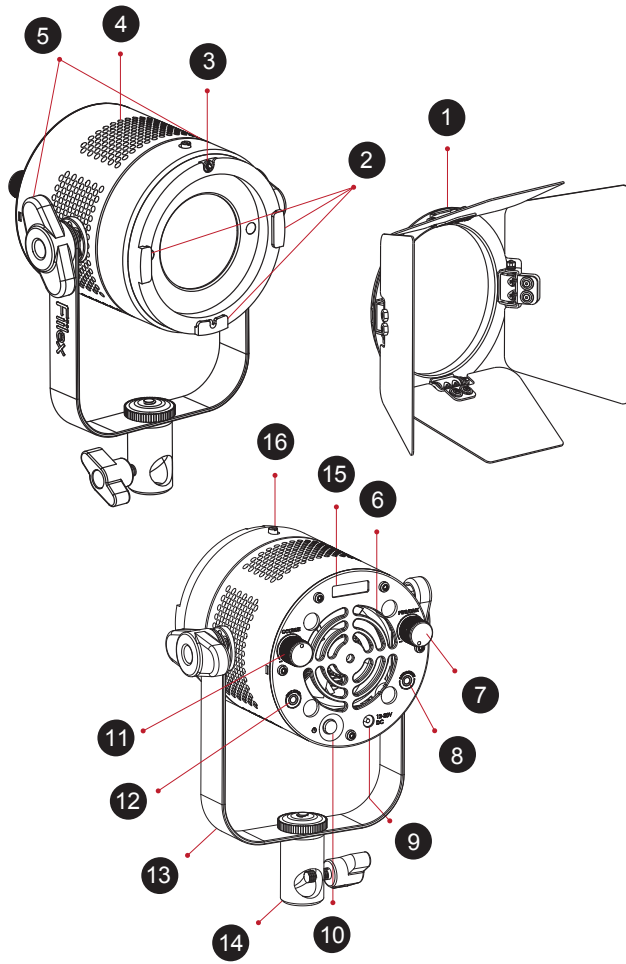
### • Adjusting the P360 Gen II Series

Use the Yoke Knobs (5) to lock the fixture's tilt position. Tighten the handle to secure.

### • DMX (Pro / Pro Plus only)

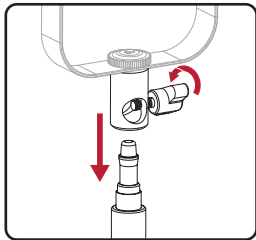
Insert phone jack (TRRS) connector into Light Control Input / Output Jack (8/12). Double click Intensity / DMX Address Knob (7) to enter DMX address edit mode, the turn knob to select address. To return to intensity adjustment mode, click knob (7) again or wait 3 seconds.

Mode	Screen Indicator	Description
Intensity	PWR	To adjust the brightness of the fixture, simply turn the Light Intensity / DMX Address Knob (7).
DMX	DMX	Control via DMX. Manual control knobs disabled. Mode activates automatically when DMX signal detected.
Color Temperature	CCT	To adjust the color temperature of the fixture, simply turn the CCT / Hue Tuning Knob (11).
Hue	HUE	To adjust the hue of the fixture, double click the CCT / Hue Tuning Knob (11) and turn the knob.



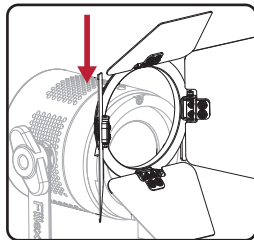
## Parts Diagram

1. 4 Leaf Barndoor
2. Barndoor Brackets
3. Accessory Lock
4. Side Vents
5. Yoke Knobs
6. Rear Vents
7. Light Intensity / DMX Address Knob  
(DMX: P360 Pro / P360 Pro Plus Only)
8. Light Control Output Jack  
(P360 Pro / P360 Pro Plus Only)
9. DC Power Input Jack
10. On / Off Button
11. CCT / Hue Tuning Knob  
(Hue: P360 Pro Plus Only)
12. Light Control Input Jack  
(P360 Pro / P360 Pro Plus Only)
13. Yoke
14. Light Stand Adapter
15. OLED Display  
(P360 Pro / P360 Pro Plus Only)
16. Accessory Lock Release



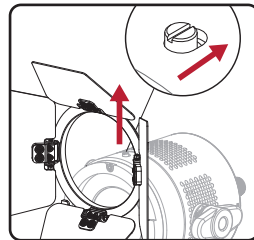
### Mounting the Light

Attach Light Stand Adapter (14) to a baby / junior stand with combo pin. Secure the light by tightening the locking knob.



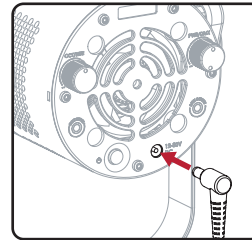
### Installing Barndoor

Slide Barndoors into Barndoor Brackets (2) until Accessory Lock (3) clicks.



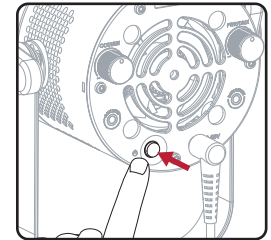
### Releasing Barndoor

To release Barndoors, slide back Accessory Lock Release (16) and slide Barndoors out of Barndoor Brackets (2).



### Plugging in the Power

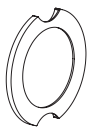
Insert the DC connector into the DC power jack.



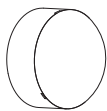
### Turning the Light On

Press the On/Off button to turn on the light. The button will turn green to indicate that the light is on.

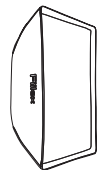
## Compatible Accessories



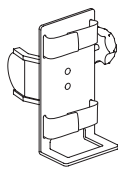
Fresnel Lens



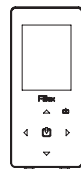
Dome Diffuser



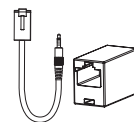
Medium Softbox Kit



Power Adapter Holder Gen II



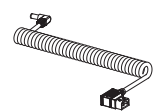
DMX Contoller



RJ45 Unit Link Cable Adapter with Coupler(F/F)

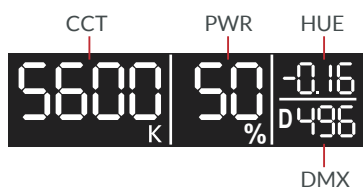


XLR5 (F) Unit Link Cable Adapter



D-Tap Cable

## Rear Panel Interface Operation



Dial	Function	Range
CCT	Set color temperature	2800K - 6500K
PWR	Set intensity	100% - 0.1%
HUE	Set HUE value	± .25 Magenta / Green
DMX	Set DMX address	1 - 510

### Assigning DMX Address:

#### DMX Address Setting Screen



1. Double click the Light Intensity / DMX Address Knob (7) to unlock DMX address setting screen on the OLED Display (15).
2. Rotate the knob to select desired base address (1-510).
3. Lock in setting by clicking knob once. Alternatively, the address will automatically lock in after 1 second of inactivity.

4. The Matrix II Tunable white occupies three consecutive DMX channels for operation. With a base DMX address 50, the controls for intensity, CCT, and hue will correspond to DMX channels 50, 51, and 52 respectively.

- For adjusting fixture's DMX address via RDM, consult operating instructions for DMX/RDM control system.

## Specifications

Weight: Fixture	1.6 lbs / 0.74 kg
Weight: Power Adapter	5.6 lbs / 2.6 kg
Light Source	DiCon Dense Matrix LED
Thermal Design	Advanced Vapor Cooling System (Classic), Active Cooling (Pro and Pro Plus)
CCT Range	2800-6500K Continuous Tuning
Dimming	0-100% (0.1% increments at low power range)
CRI	93-95
Power Consumption	90W Max
Power Connection	90W AC/DC Power Adapter
Input Voltage	AC Power: 100-240VAC. 50-60Hz DC Power: 19VDC, 90W max.
Operating Temperature	32-104°F / 0-40°C
Beam Angle	65° (31° w/ P360 Gen II Series Fresnel accessory)
Mounting	Baby / junior stand with combo pin.
Tilt Angle	±90°
DMX Type	DMX 512/RDM
DMX Ports	XLR5 or RJ45
USB Power	N/A
Mini USB Interface	N/A
Housing Color	Black
IP Rating	IP-24
LED Lifetime	42,000 hours
Certifications	CE, UL, FCC

## Safety

- Do not attempt to disassemble the body of the P360 Gen II Series, doing so will immediately void the factory warranty.
- Do not install the P360 Gen II Series in a damp or wet area.
- Do not submerge P360 Gen II Series in water.
- Do not cover the side or back air vents.
- Only use the included power adapter, failure to do so may cause damage to the LED light.
- Only use a soft, dry towel to gently clean the exterior of the light.
- Before using the light for the first time, remove the protective membranes.
- The light stand must be installed on an even and flat surface. The center post should be less than 9.5" from the ground when the three legs are down

## Warranty

Unless otherwise stated, your product is covered by a **one year parts and labor limited warranty**. Fiilex guarantees, to the original buyer, that this product is to be free of defects in both workmanship and material for a period of one year from the date of shipment. This warranty extends to all products which have proved defective through normal use but excludes products that have been disassembled, modified or misused by the buyer or any other person. This warranty is in lieu of all other warranties, and disclaims all warranties expressed or implied, including any warranty of merchantability, fitness for a particular purpose, or arising from the course of dealing between the parties or usage of trade.

### Returning an Item Under Warranty for Repair

It is necessary to obtain a Return Authorization Number (RA#) from your dealer/ point of purchase BEFORE any units are returned for repair. Fiilex will make the final determination as to whether or not the unit is covered by warranty. Fiilex will replace or repair to proper working condition any products that are returned under warranty. Products repaired or replaced under warranty are under warranty only for the remaining unexpired period of time of the original warranty.

Any Product unit or part returned to Fiilex must be packaged in a suitable manner to ensure the protection of such Product unit or parts. The package must be clearly and prominently marked to indicate that the package contains returned product units or parts with a Return Authorization (RA#) number. All returned product units or parts must be accompanied by a written explanation of the alleged problem or malfunction.



[www.fiilex.com](http://www.fiilex.com)

1689 Regatta Blvd. Richmond, CA 94804  
| (510) 620-5155 | [fiilex@fiilex.com](mailto:fiilex@fiilex.com)