



Matrix II RGBW

Cinematic Quad-Source LED Punch Light

With HSI, RGBW, and CCT control modes, the Matrix II RGBW brings full-color control to Fiilex’s line of quad-source LED punch lights. Unlike other RGBW fixtures, the Dense Matrix LEDs in the Matrix II RGBW feature multi-wavelength color groups. This means that, for example, different chips in the blue range of the LED array emit different shades (or wavelengths) of blue. The Matrix II RGBW blends these wavelengths to produce high-quality color that is rich and consistent across the visible spectrum.

The Matrix II RGBW fixture draws 340W of power and produces an output greater than a 1k tungsten soft light. This output is generated by the four Dense Matrix LED clusters that are set into a custom-designed reflecting chamber and enclosed by a layer of diffusion. With its four LED sources, the Matrix II supports additional optics and accessories that can easily reshape the fixture’s illumination.



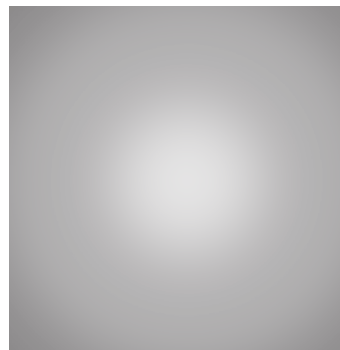
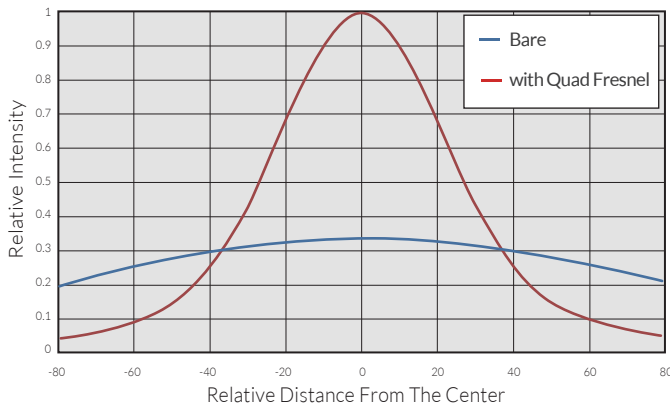
FEATURES

- 340W power draw
- Quad 75W DiCon Dense Matrix LED
- 99° wide beam, 31° with optional Quad Fresnel
- Smooth dimming down to 0%
- Flicker free at any frame rate
- HSI Mode (hue, saturation, intensity)
- Tunable CCT Mode (2800-10000K)
- High CRI at any color temperature
- Broadband full-spectrum LED source
- Designed in USA. Assembled in USA/Taiwan

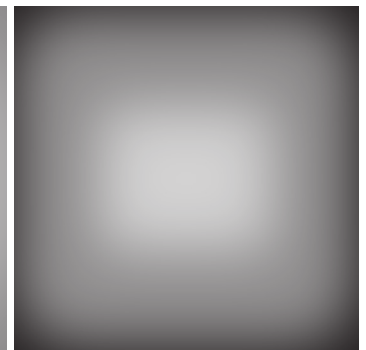
EXCELLENT COLOR RENDERING

CCT	R1	R2	R3	R4	R5	R6	R7	R8	R9	R10	R11	R12	R13	R14	R15	CRI _{Ra} *	CRI _{Ext} *	TLCI
3200K	96	98	86	95	98	96	95	91	87	88	94	86	98	90	95	94	93	92
5600K	98	96	91	97	96	94	97	96	90	86	95	86	97	94	97	96	94	95

BEAM PROFILE



Matrix II



Matrix II with Quad Fresnel

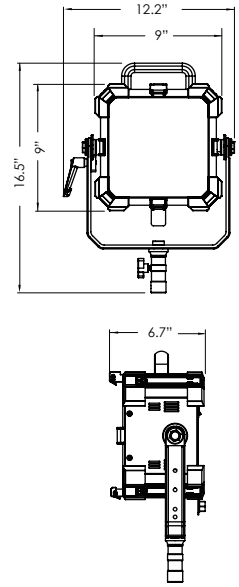
190925A

Matrix II RGBW

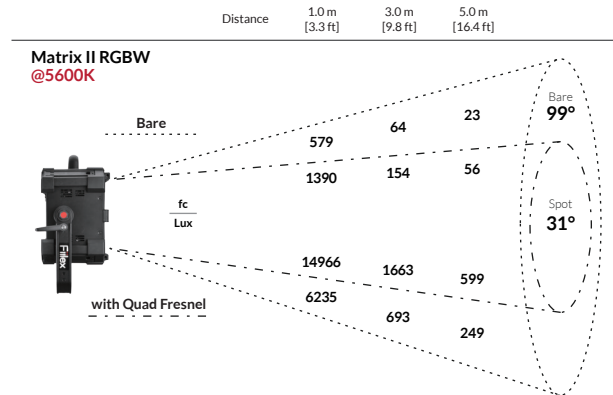
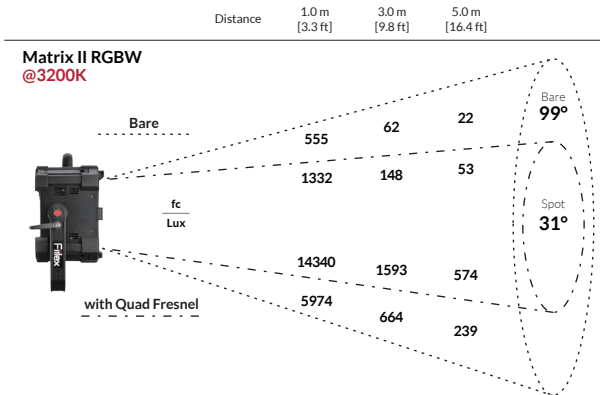
Cinematic Quad-Source LED Punch Light

SPECIFICATIONS

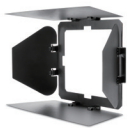
Fresnel Size	Optional Quad Fresnel Leans (Removable)
Beam Angle	99° (31° w/ Optional Quad Fresnel Lens)
CCT Range	2800-10000K Continuous Tuning
Hue Control	± 0.25 Green/Magenta
CRI	95 Typical
Dimming	100% - 0% (Cut off @ 0.1%)
LED	(Four) 75W DiCon Dense Matrix LED
Input Power	120V-240VAC
Power Consumption	340W Max AC 300W Max DC
Power Adapter	AC Input: 100-240V AC, 50~60Hz DC Output: 48V
Power Port	XLR-3P
DMX Port	Two XLR Ports-5P (512 Addresses)
USB 5V	Yes
Weight	Fixture: 9.7 lbs / 4.4kg (Includes Yoke) Power Adapter: 5.6 lbs/2.6 kg
Size	L 6.7" x W 12.2" x H 16.5" / L 171mm x W 311mm x H 418mm
Mount Style	Baby Stud 5/8" Female (16mm) and Junior Stud 1-1/8" Male (28mm)
Thermal Design	Advanced Vapor Cooling System (Fan Cooled)
Operating Temperature	32 - 104°F / 0 - 40° C



PHOTOMETRIC DATA



OPTIONAL ACCESSORIES & KITS



Matrix Barndoor



Quad Fresnel



Matrix Speed Ring



Softbox



H142 Kit
1x Matrix II RGBW