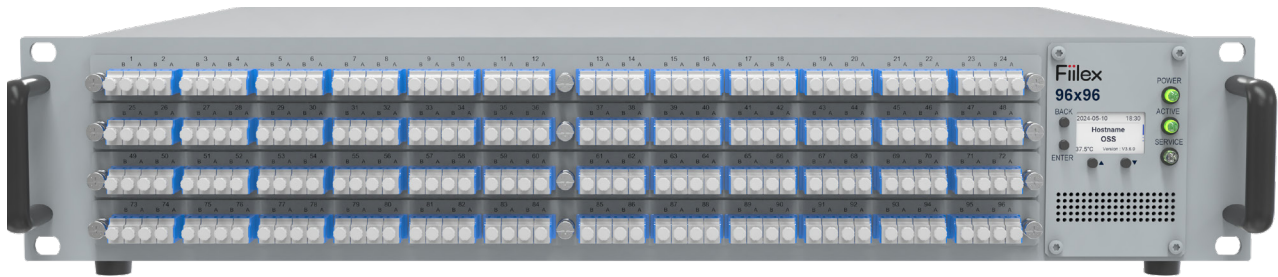


OPTICAL MATRIX SWITCH

96 DUPLEX PORTS

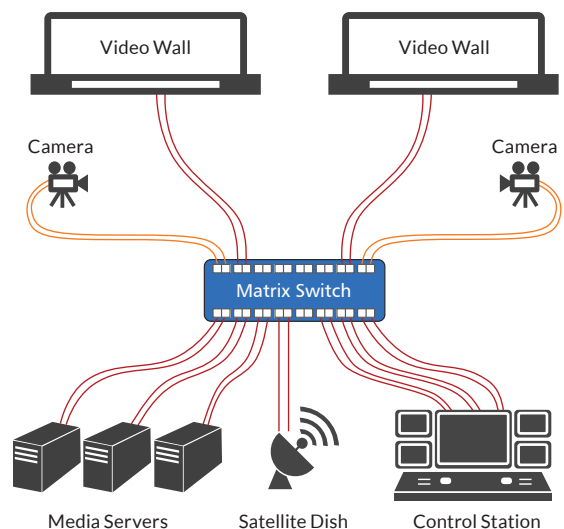
P/N | **OSS-96MN-LC/UPC*** 96 Port Switch *Other connector options are available.

Fiilex Media Matrix Switch is designed to provide flexible connectivity to high bandwidth video transmission networks. This switch is often used to connect different data servers and broadcast studios to a central control center, or link media storages and large display walls to Back-of-House. The switching function is performed all optically, therefore, there is minimum latency and is future-proof of any data format changes. The product is compact, silent, consumes less electricity than any traditional optical-electrical-optical (OEO) switch, and has a proven track record of reliability. As a SDN ready network device, Fiilex Matrix Switch can be managed with a proprietary Web GUI or one of several standard network protocols.



FEATURES

- All Optical Switch
- No Latency
- Low loss
- Fast Switching Speed
- SDN Ready
- MEMS Durability



OPTICAL MATRIX SWITCH

96 DUPLEX PORTS

PARAMETER	RATING
Operating λ (nm)	1260 - 1650
Insertion Loss (dB)	2.0 max.
Crosstalk (dB)	-60 max.
Back Reflection (dB)	-45 max.
Switching Time (ms)	25 max.
Fiber Type	Singlemode, Duplex Fiber
Switch Technology	MEMS
Switch Type	Non-Blocking, Bidirectional
Operating Temp (°C)	10 to 50
Storage Temp (°C)	-20 to 60

OPERATION

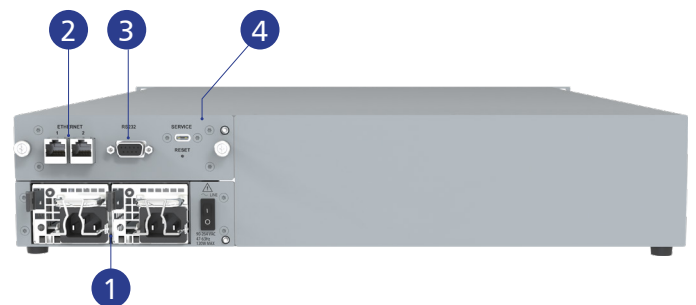
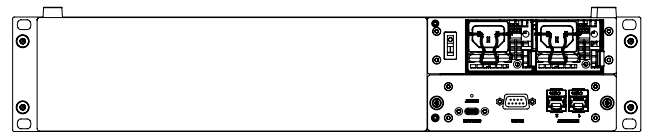
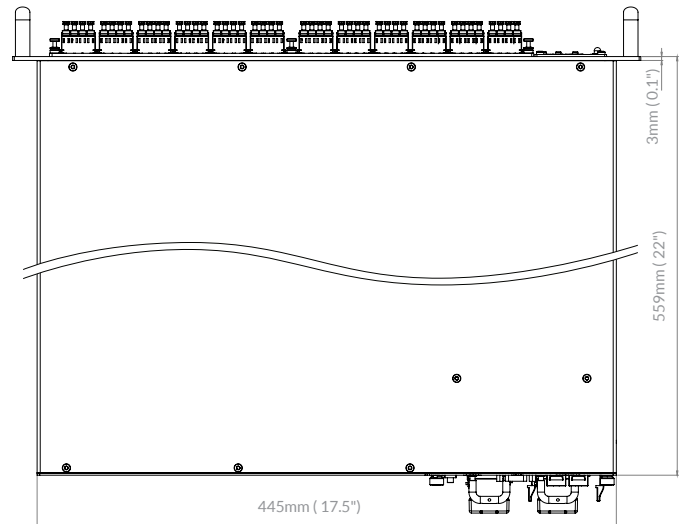
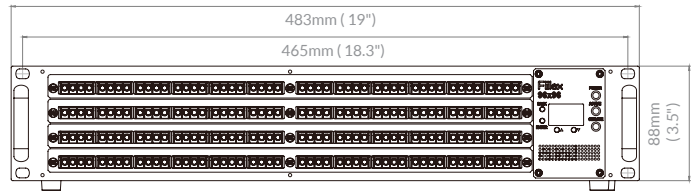
Remote Management	Web GUI, REST API, NETCONF, SNMPv3, TL1, RS232
-------------------	--

ELECTRICAL

Power Supply	100-240 VAC, 50-60Hz, Redundant
Power Consumption (W)	50 typ.
Interface	Serial & Dual Ethernet RJ45
Control Unit	Field Replaceable

MECHANICAL

2U 19" Rackmount Chassis



- 1 Redundant, Hot-Swappable AC Power Supplies
- 2 Dual Ethernet RJ45 Interfaces
- 3 Serial Interface
- 4 Field Replaceable Control Unit